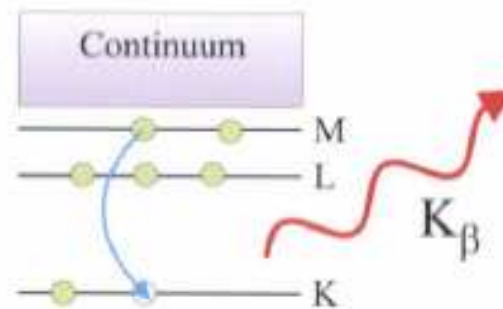
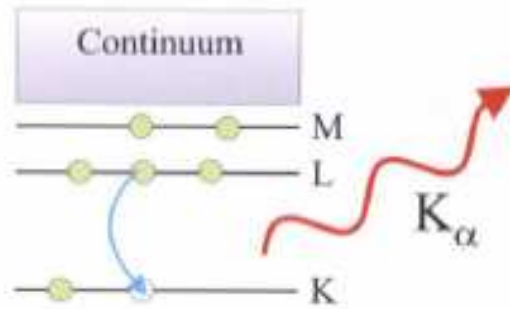
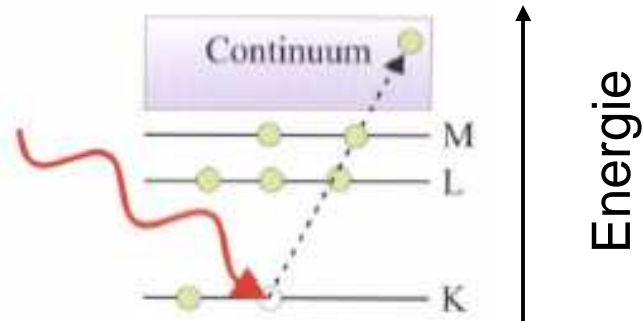
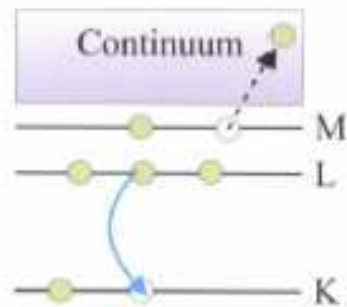


# Absorption von Röntgenstrahlung

photoelektrische  
Absorption



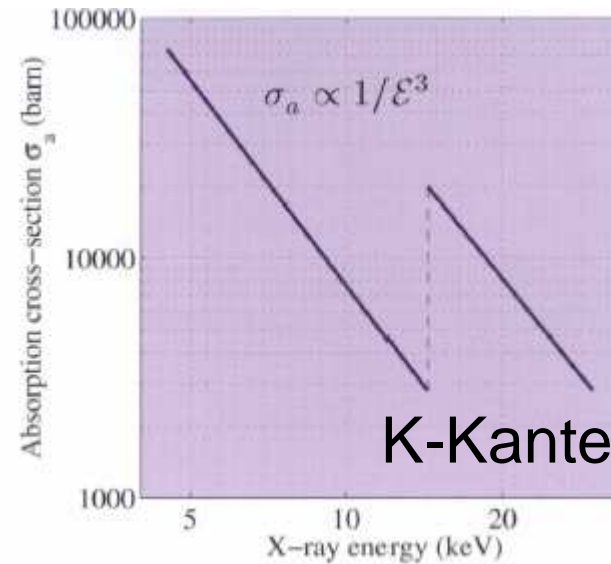
Fluoreszenz-  
Emission



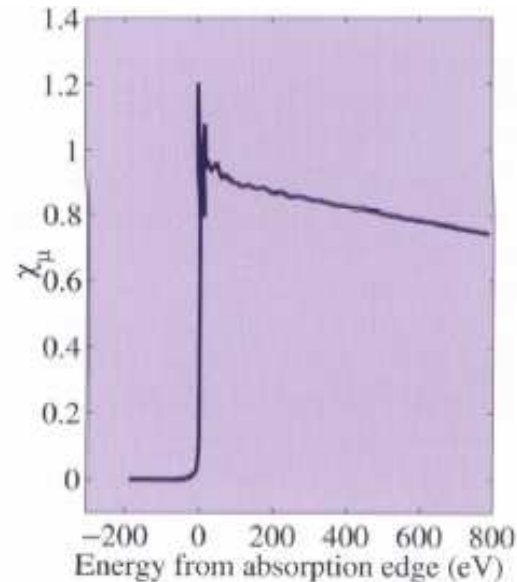
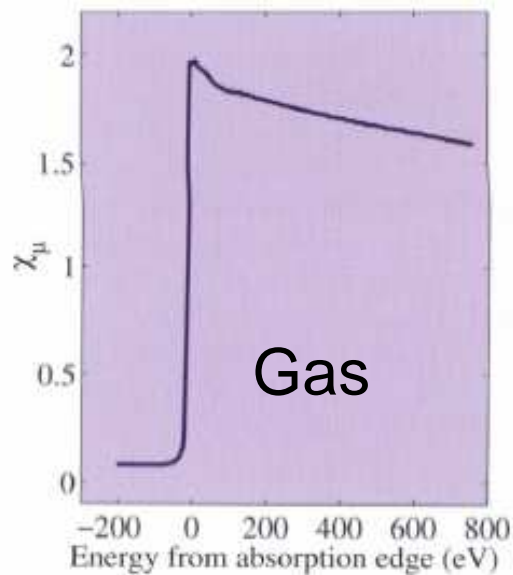
Emission eines Auger-Elektrons

# Röntgen-Absorptionsquerschnitt

Absorptionsquerschnitt  
von Krypton



Feinstruktur (EXAFS)  
an der Kr K-Kante



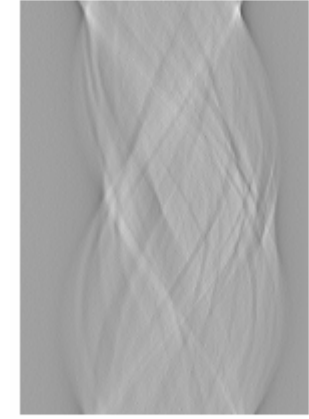
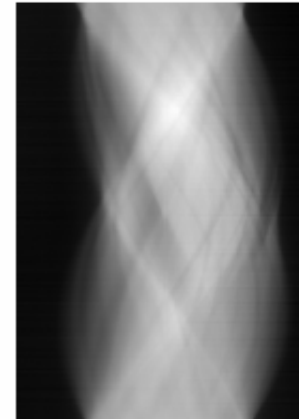
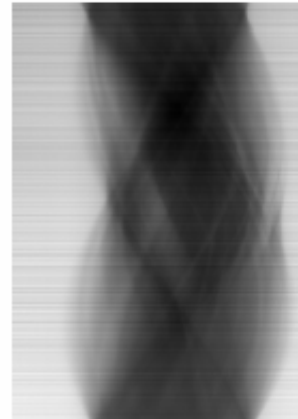
2D-Kristall  
(adsorbiert  
auf Graphit)

# Röntgen-Tomographie

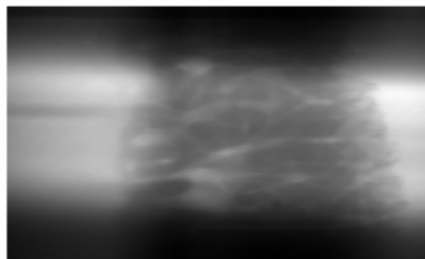


Sinogramm: jeweils eine Zeile

↑  
Winkel

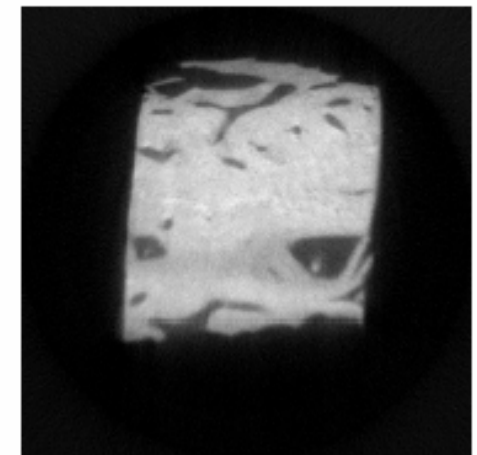


Bilder (original, korrigiert)

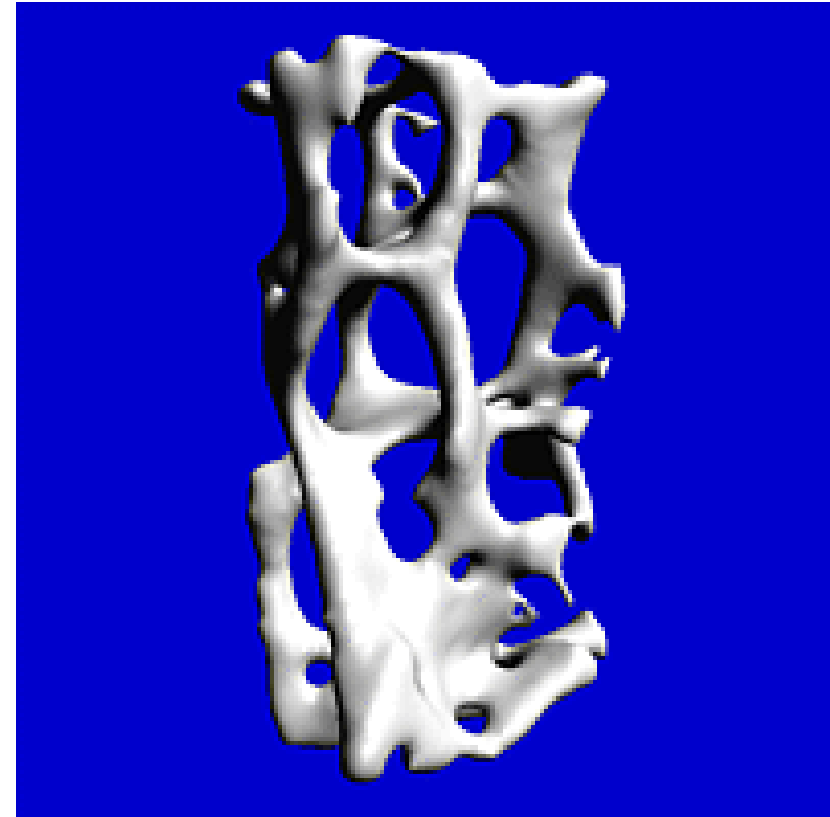
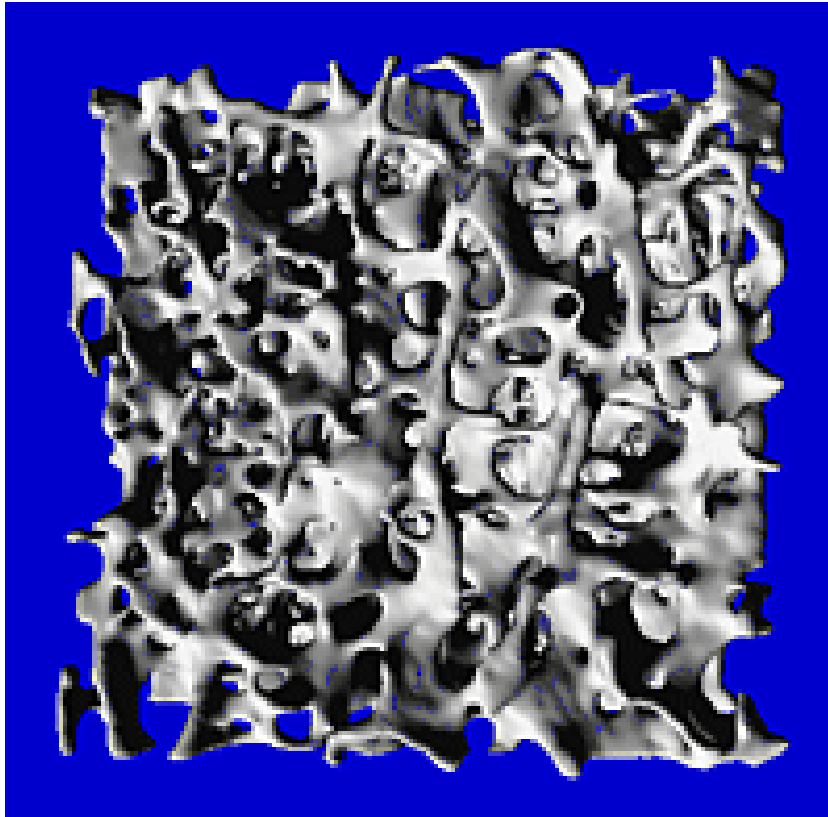


(bei einem Winkel)

↓  
Rekonstruktion



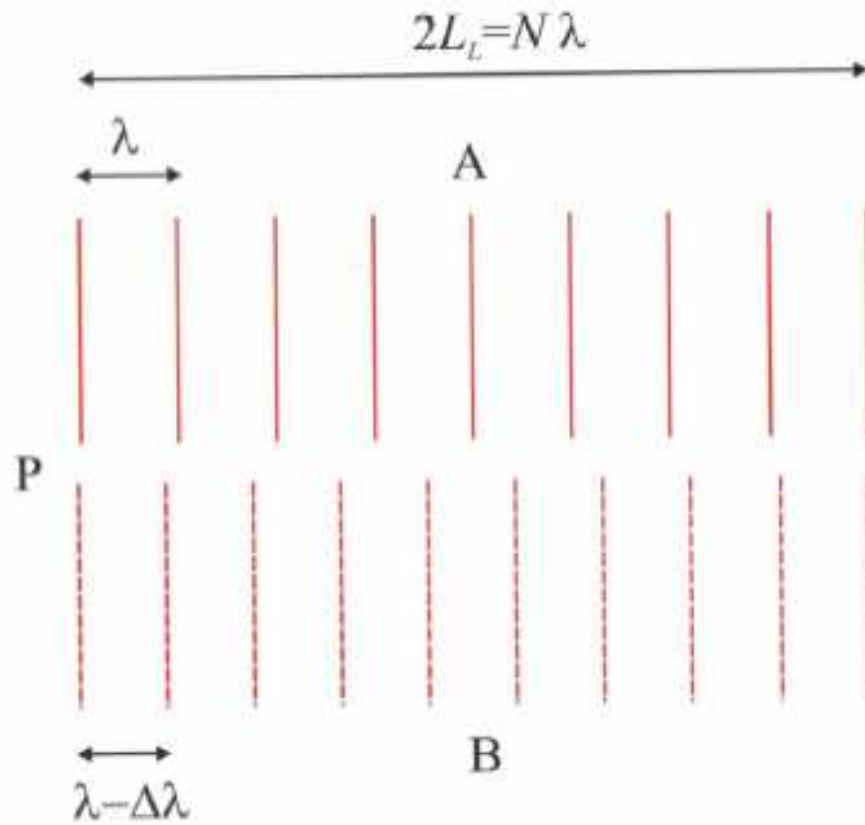
## Walkknochen: *In situ* Deformation, Tomographie



lokale Information über mechanisches Versagen

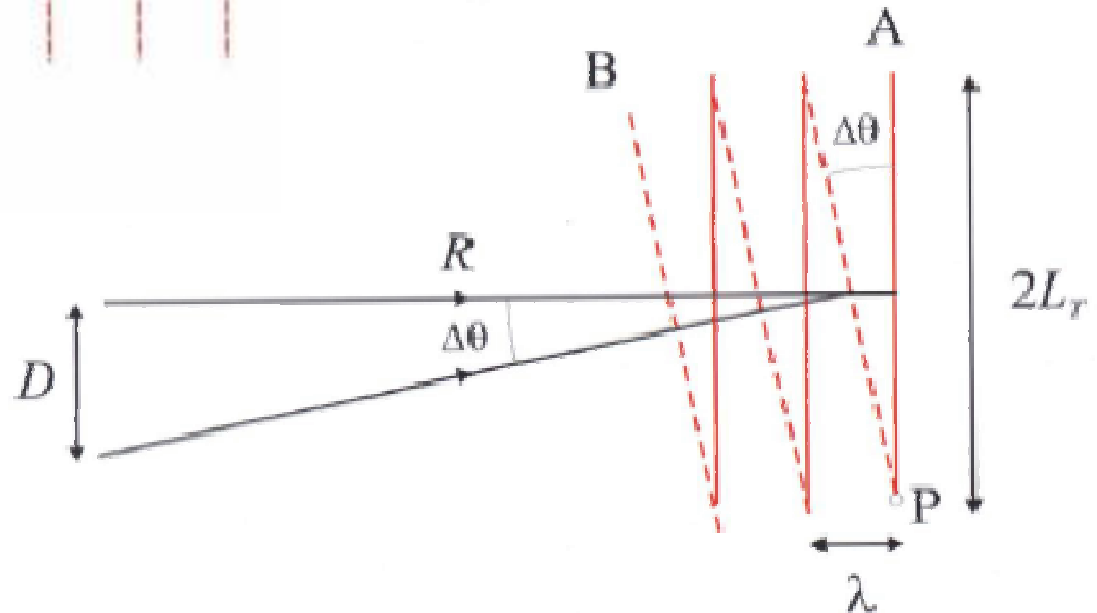
R. Müller *et al.*, *Technology and Health Care* **6**, 433-444 (1998)

# Kohärenz



longitudinale  
Kohärenzlänge

transversale  
Kohärenzlänge



# Kohärentes Imaging

