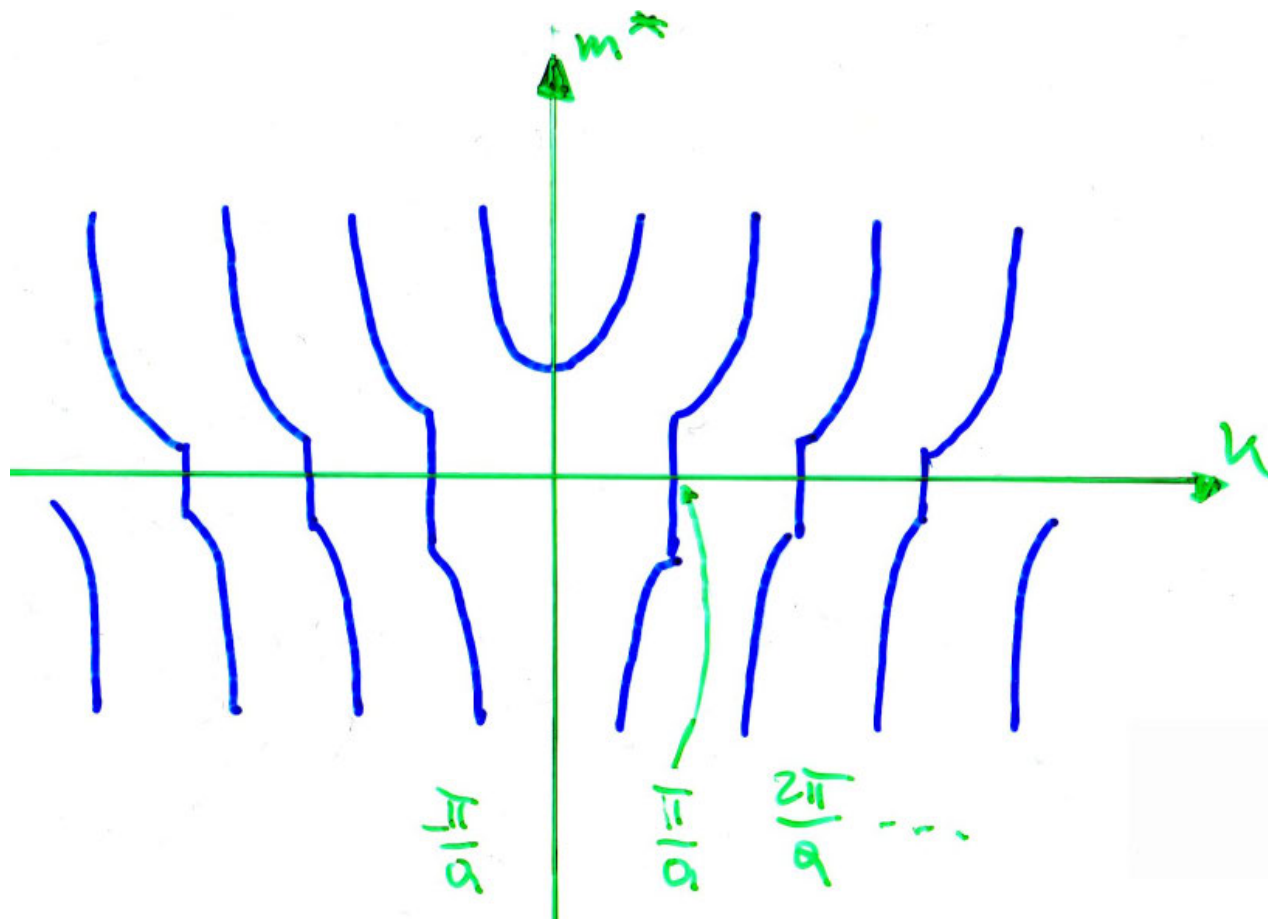
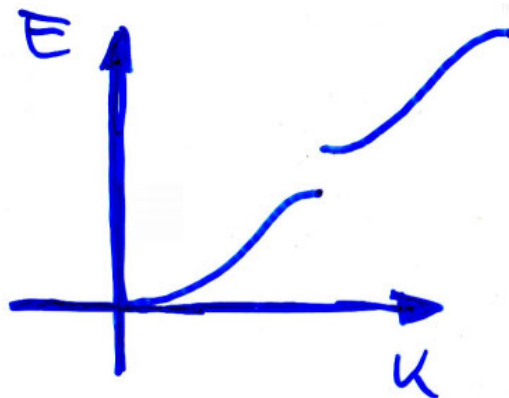


$$m^* = \hbar^2 \left( \frac{\partial^2 E}{\partial k^2} \right)^{-1}$$



# Effektive Masse (bei $E_F$ )

<u>Metall</u>	<u><math>m^*/m</math></u>
Li	1,2
Be	1,6
Na	1,2
Al	0,97
Co	14
Ni	28
Cu	1,01
Zn	0,85
Ag	0,99
Pt	13
heavy fermions	$\sim 1000$